

R. Wenkam

DESIGNED TO ATTRACT ATTENTION

Wayne's Associated Service

Aiea, Oahu, T. H.

Wimberly and Cook, Architects

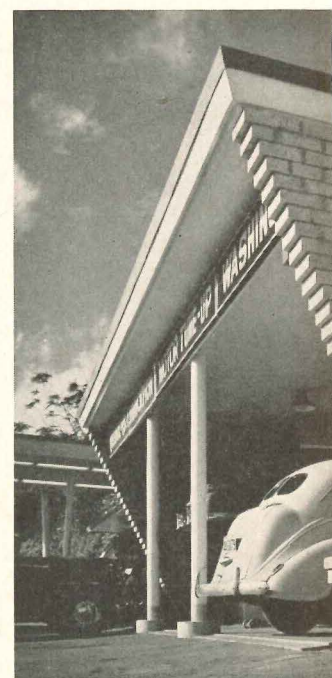
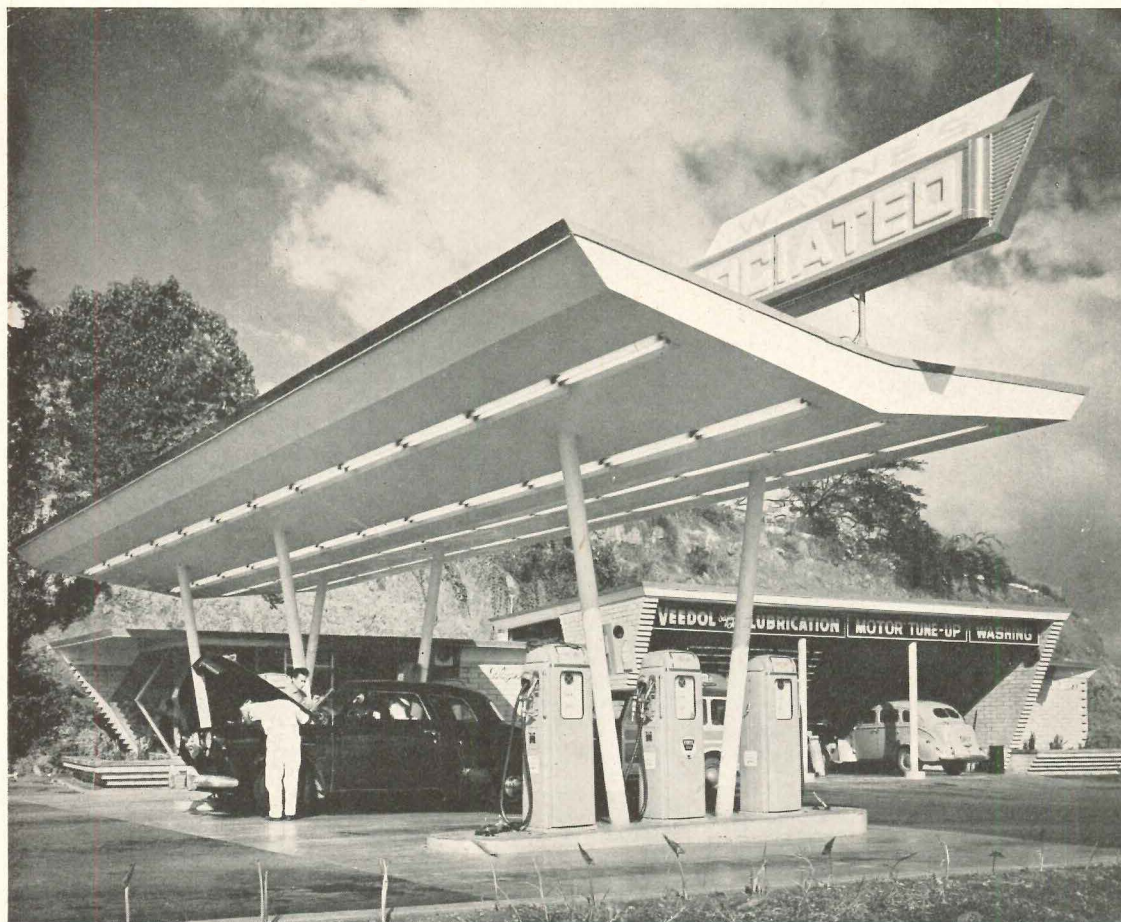
J. Grant Morgan, Structural Engineer

OWNER AND ARCHITECTS agreed at the outset that this service station must be of "eye-arresting design." Located on a main highway near Pearl Harbor, it had to attract attention to compete with several other service stations in the vicinity. Yet economy of construction was a main requirement.

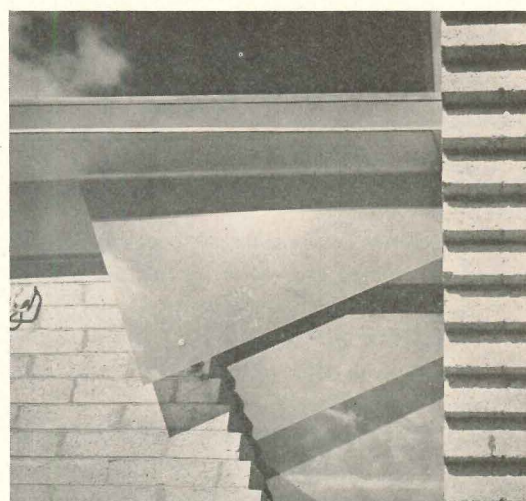
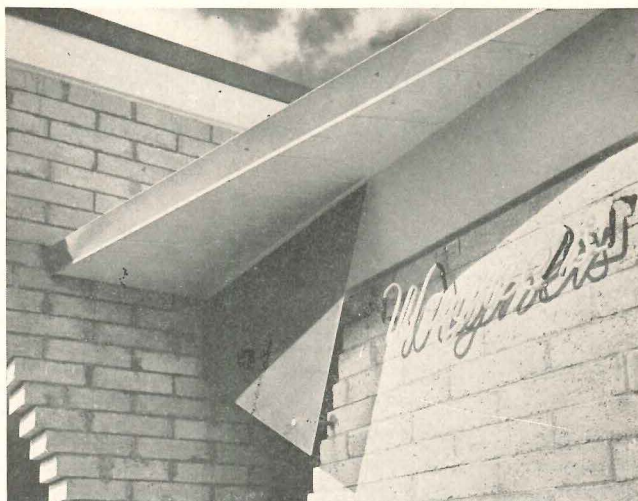
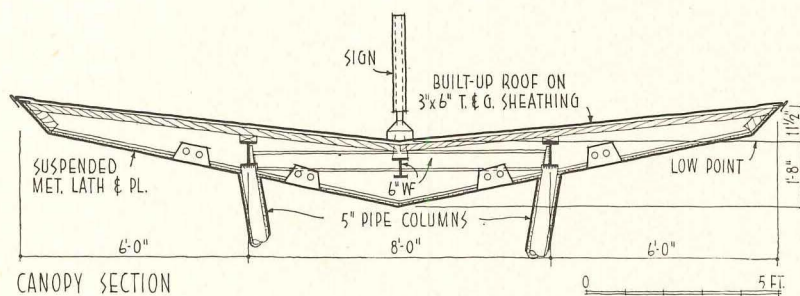
Three major devices were used as attention-getters: a flaring pump canopy, wide open shop and sales areas, and highly unusual show windows (page 187). The

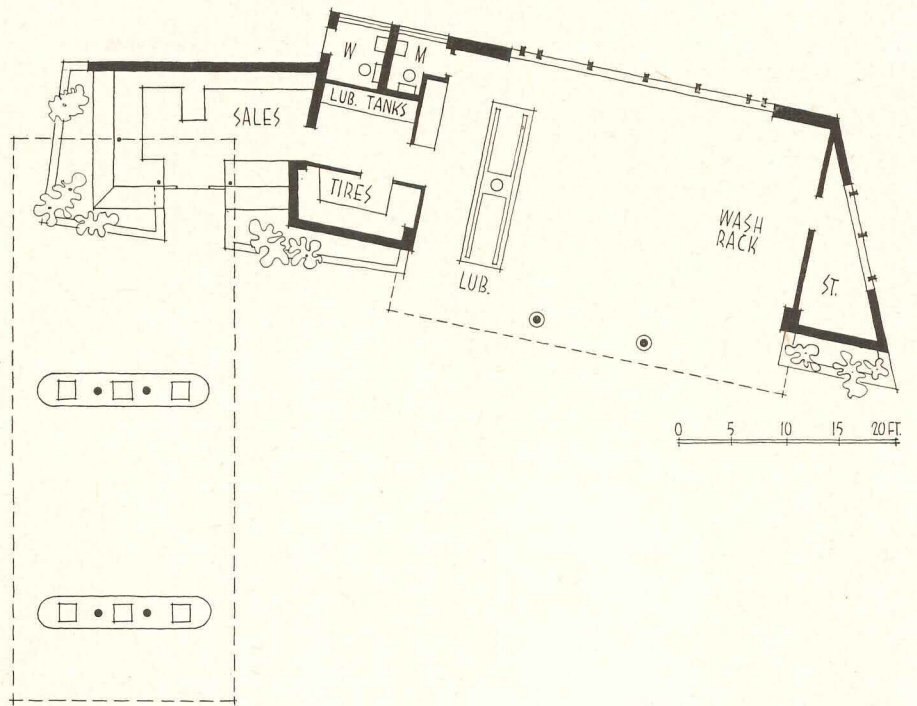
canopy is supported by steel pipe frames; construction is of steel wide-flange roof beams with a 3 by 6 T & G roof deck and a suspended lath and plaster ceiling. On top of it is a specially designed sign panel intended to eliminate the possibility of the unattractive signs so frequently used by service stations. Wash rack and lubrication hoist are housed together in a high-ceilinged unit with adjacent storage and toilet facilities. A small office and parts sales room occupy a connecting low wing.

DESIGNED TO ATTRACT ATTENTION



Main structure is of locally made buff-colored concrete block walls with wood roof framing, using steel members for beams in long span. Mild Hawaiian climate eliminated need for doors and heating facilities





R. Wenkam

Show windows in office wing (right) were constructed of an inexpensive line of store front moldings and heat absorbing glass. Design was deliberately unusual, partly for effect and partly as an experiment in solving problem of show window reflections. Louvers (below) screen storage room windows

