

192,414

DRIVE-IN RESTAURANT BUILDING

Richard E. Bierley, Springfield, Ohio, assignor to The Red Barn System, Inc., Springfield, Ohio, a corporation of Ohio

Filed Oct. 16, 1961, Ser. No. 67,100

Term of patent 14 years

(Cl. D13—1)

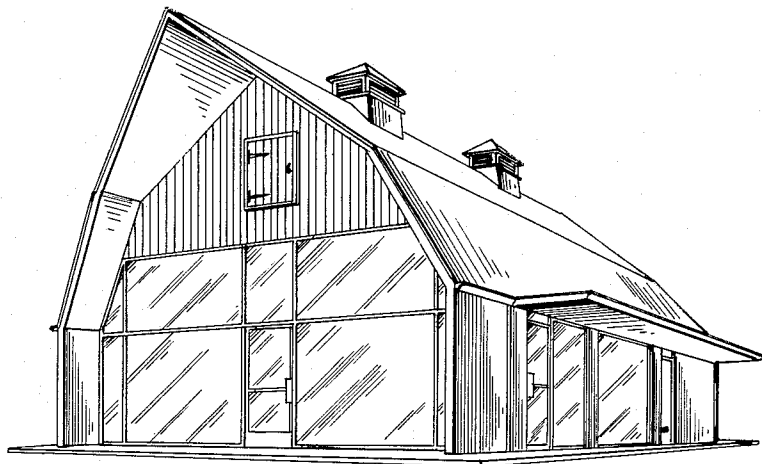


FIG. 1

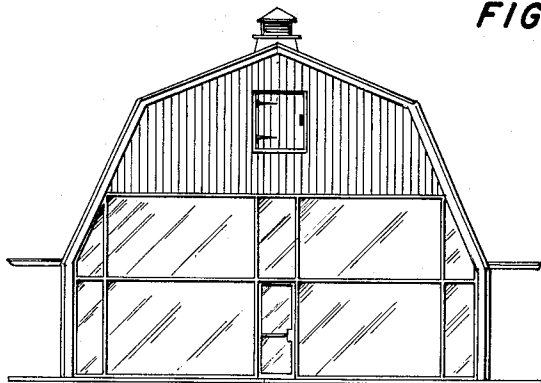


FIG. 2

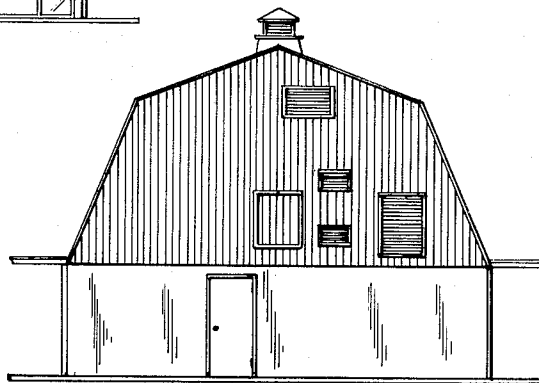


FIG. 3

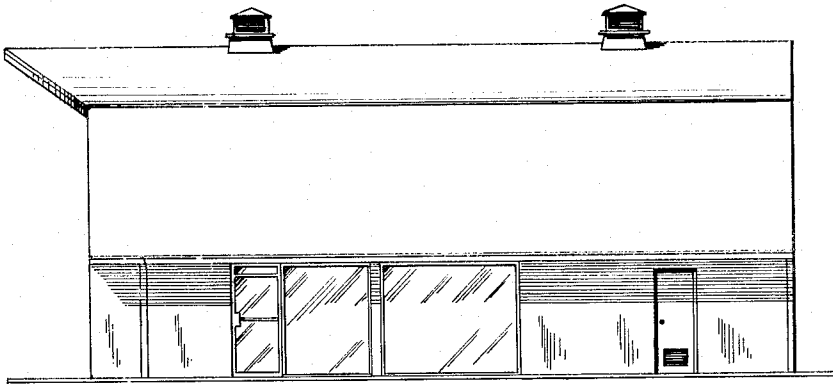


FIG. 4

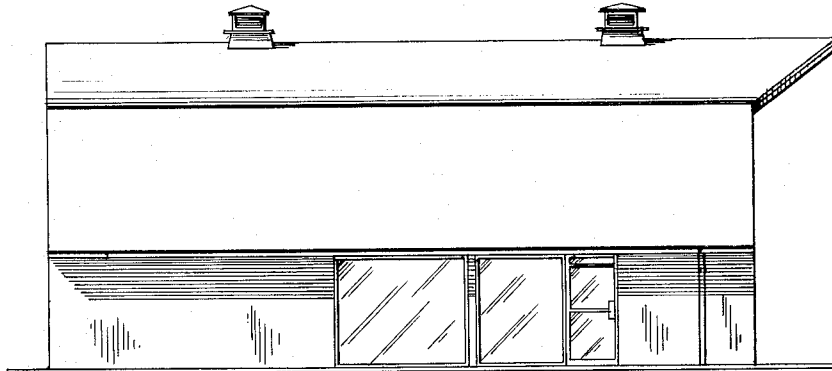


FIG. 5

FIG. 1 is a front perspective view of a drive-in restaurant building, showing my new design;

FIG. 2 is a front elevational view thereof;

FIG. 3 is a rear elevational view thereof;

FIG. 4 is a side elevational view thereof looking from the right in FIG. 2; and

FIG. 5 is a side elevational view thereof looking from the left in FIG. 2.

I claim:

The ornamental design for a drive-in restaurant building, substantially as shown.

References Cited in the file of this patent

Brown Fence and Wire Co. Bargain Book, received Jan. 29, 1934, page 121, barn at top left of page.