

189,613

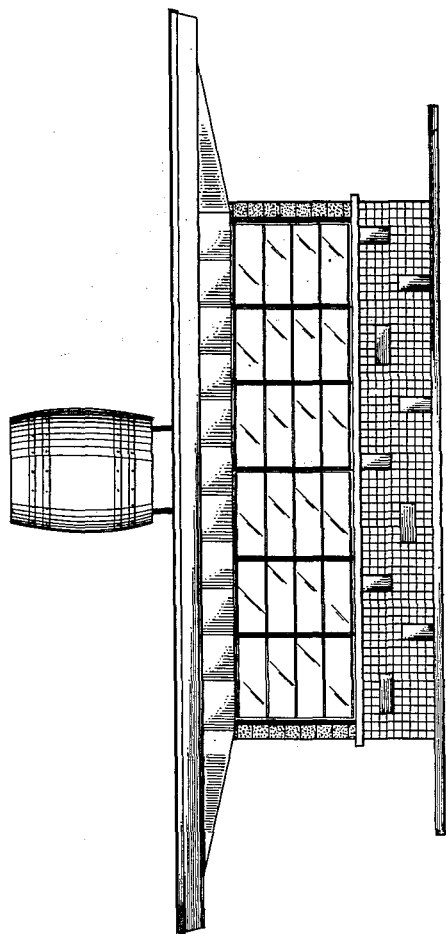
## COMBINED FOOD AND BEVERAGE VENDING BUILDING

Palmer G. Murphy, 666 Oak St., Biloxi, Miss.

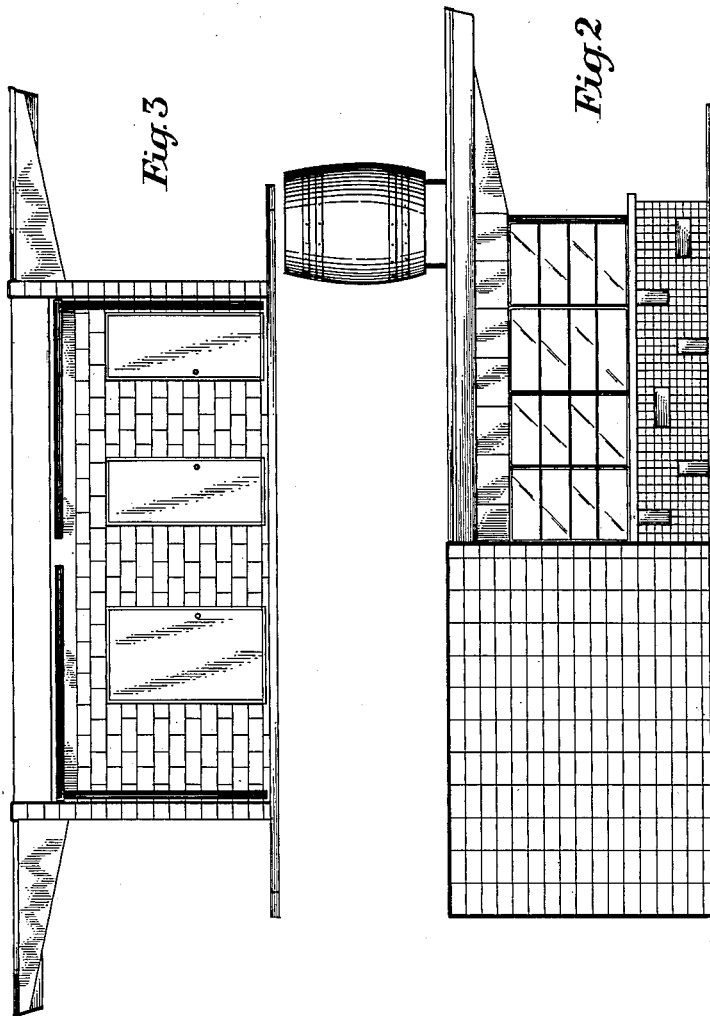
Filed May 21, 1959, Ser. No. 56,009

Term of patent 14 years

(Cl. D13—1)



*Fig. 1*



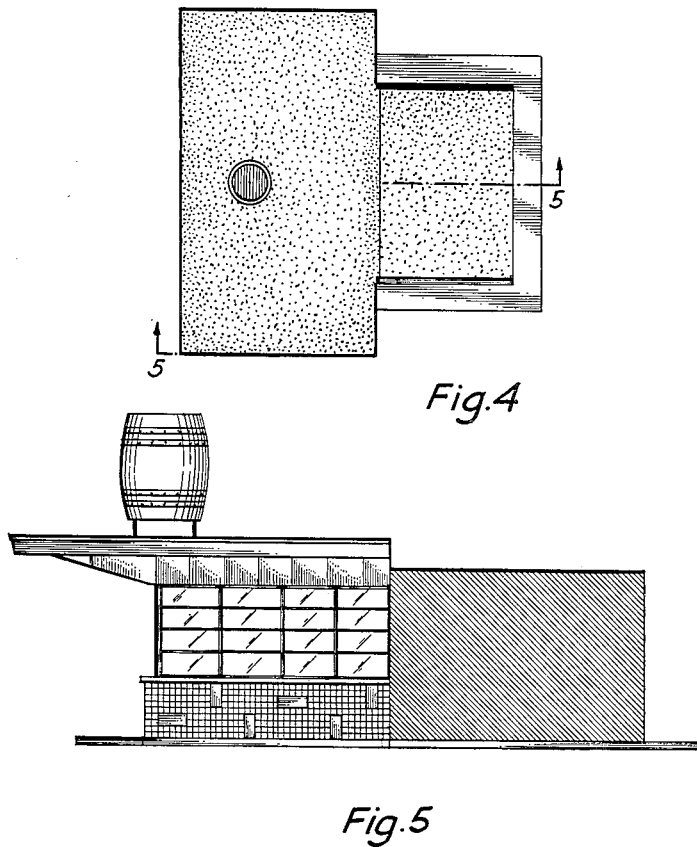


Fig. 1 is a front perspective view of a combined food and beverage vending building showing by new design;  
Fig. 2 is a side view thereof;  
Fig. 3 is a rear view thereof with the barrel on the top of the building omitted for convenience of illustration only;  
Fig. 4 is a top plan view thereof; and  
Fig. 5 is a vertical sectional view taken along the line 5—5 of Fig. 4 to show the roof levels thereof.  
The other side of the design opposite from that illustrated in Fig. 2 is the same as the side shown in Fig. 2.

I claim:  
The ornamental design for a combined food and beverage vending building, as shown and described.

References Cited in the file of this patent

UNITED STATES PATENTS

D. 174,520	Triantafillon et al. ....	Apr. 19, 1955
D. 183,836	Ganus .....	Nov. 4, 1958