

# United States Patent Office

Des. 195,764  
Patented July 30, 1963

195,764

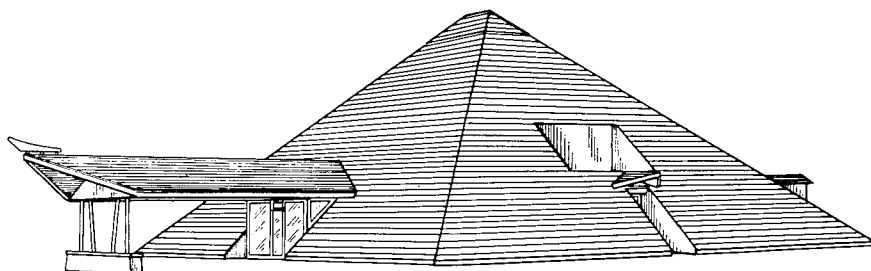
BUILDING

Virginia Beth, Beaver Dam, Wis., assignor to Richard  
Beth, Virginia Beth, John Glavich, and Marie Glavich,  
Beaver Dam, Wis., a partnership

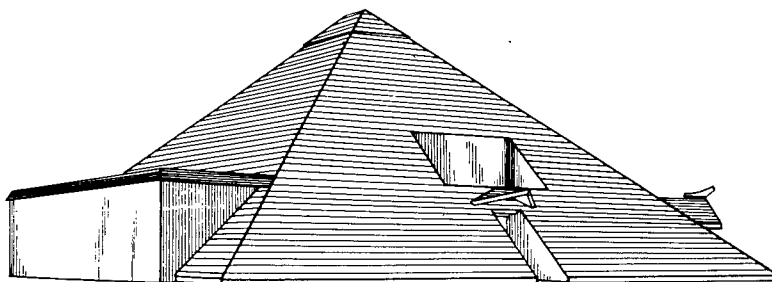
Filed Dec. 6, 1962, Ser. No. 72,745

Term of patent 14 years

(Cl. D13—1)



*Fig. 1*



*Fig. 2*

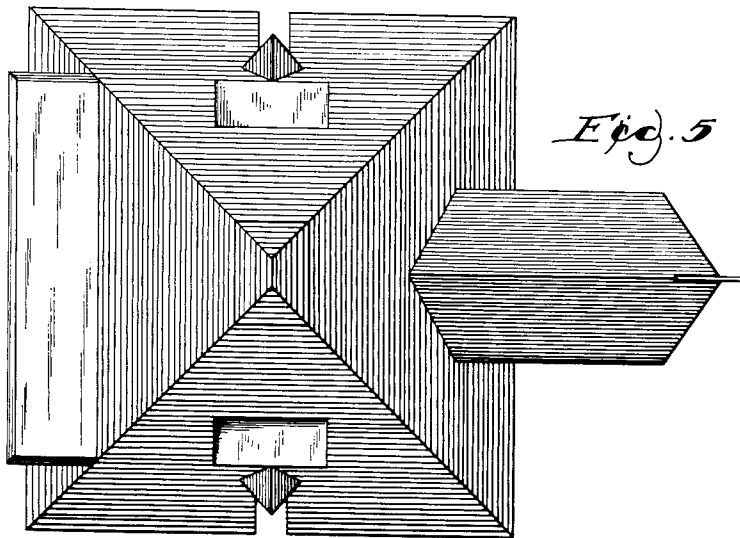
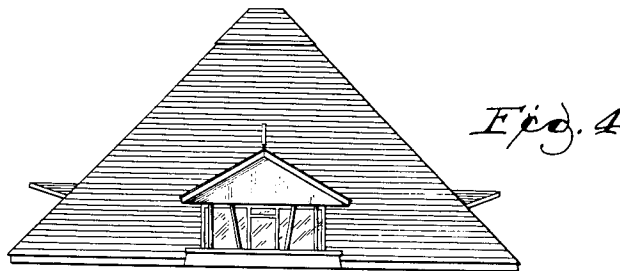
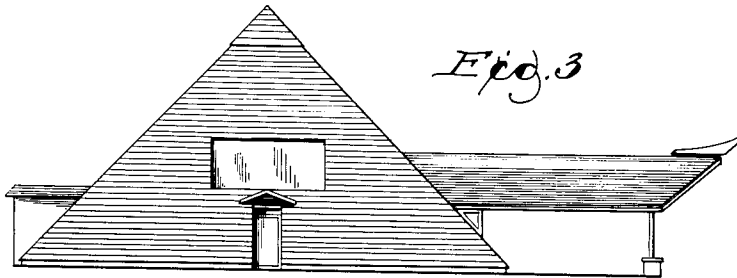


FIG. 1 is a front perspective view  
FIG. 2 is a rear perspective view  
FIG. 3 is a side elevational view  
FIG. 4 is a front elevational view  
FIG. 5 is a top plan view

I claim:

The ornamental design for a building, as shown.

**References Cited** in the file of this patent

American Builder, December 1957, page 23, house at bottom right of page.

Western Architect and Engineer, May 1960, page 16, modular shelter illustration at top of page.

Western Architect and Engineer, December 1960, pages 27 and 28, Northridge Congregational Church of Los Angeles illustrations.